

Glen Eira Classified Tree Register

TREE REPORT

Classified Tree Register nomination number: 80/CTR/2021

Date of Assessment: 18/05/2022

Assessing Officer: Christian Renaud

Tree Owner: Private Tree

Address: 12 Gardenvale Rd, Caulfield South

Location: Private Open Space

Record type: Group of Trees

Number of trees: 02

Botanical name: *Eucalyptus camaldulensis*

Common name: Rive Red Gums

Structural Root Zone (SRZ):

Tree 1 – 2.6m

Tree 2 – 3.3m

Approximate age:

Tree 1 – 70+ years

Tree 2 – 120+ years

Diameter at breast height:

Tree 1 – 75cm

Tree 2 – 100cm

Tree Protection Zone (TPZ):

Tree 1 – 9m

Tree 2 – 12m

Tree height:

Tree 1 – 19m

Tree 2 – 23m

Tree canopy width:

Tree 1 – 13m

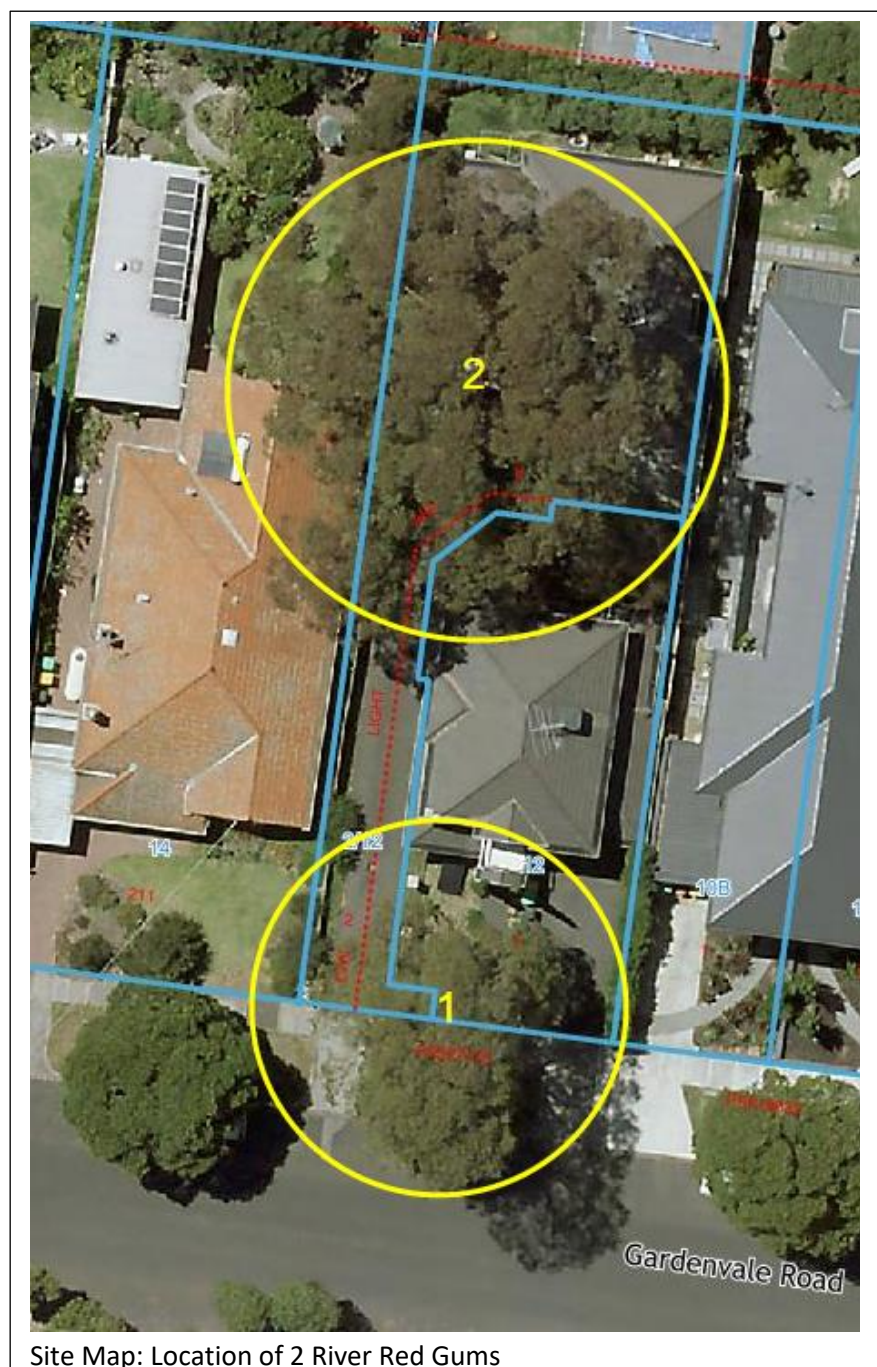
Tree 2 – 22m

Co-ordinates:

325770.4 & 5803525.4

325771.3 & 5803556.2

Glen Eira Asset ID's: N/A



Site Map: Location of 2 River Red Gums

Statement of significance – Tree 1:

This tree fulfils the criteria of:

- Outstanding size (girth height spread),
- Aesthetic value,
- Outstanding habitat and biodiversity value,

The River Red Gum is an indigenous species to Glen Eira, with this smaller of 2 trees on private land likely to be a self-seeded example located right on the front boundary line of the property. It is a particularly tall example of the species to be found in a private garden and being located alongside the public footpath ensures it has a high visual presence from the public realm. The tree makes a major aesthetic contribution to the local area and is striking along the streetscape. It provides substantial canopy coverage and shading over paved surfaces which ensures significant amenity to the community.

As a particularly tall, indigenous flowering tree in the local area, it is of outstanding value for native wildlife providing a valuable resource for foraging and roosting.



Tree 1 – River Red Gum (*Eucalyptus camaldulensis*)

Statement of significance – Tree 2:

This tree fulfils the criteria of:

- Particularly Old Specimen,
- Outstanding size (girth height spread),
- Aesthetic value,
- Outstanding example of the species,
- Outstanding habitat and biodiversity value

This larger of the 2 trees is a particularly old example of the species to be found on private land in Glen Eira. It is most likely a self-seeded example from the before the area was developed into housing. The tree is of outstanding size as it is a very large for any tree species located on private land in the area for both height and canopy spread.

Although set back from the street frontage, the size of the tree provides significant visual presence as it can easily be seen over the nearby dwelling, ensuring the tree is striking in its setting, making a major contribution to the local landscape and neighbourhood character. The loss of this tree would represent a significant loss of amenity to the community.

Due to its impressive size, age and health, this is an outstanding example of the species for the local area and beyond, whether on private land or in otherwise. This also ensures the tree has outstanding habitat and biodiversity value as it supports a range of native wildlife with foraging, roosting and habitat.



Tree 2 – River Red Gum (*Eucalyptus camaldulensis*)